



# SAMLite Installation and Initial Setup

---

**Build 2.2.0.47**

**2020-09-11**

## Table of Contents

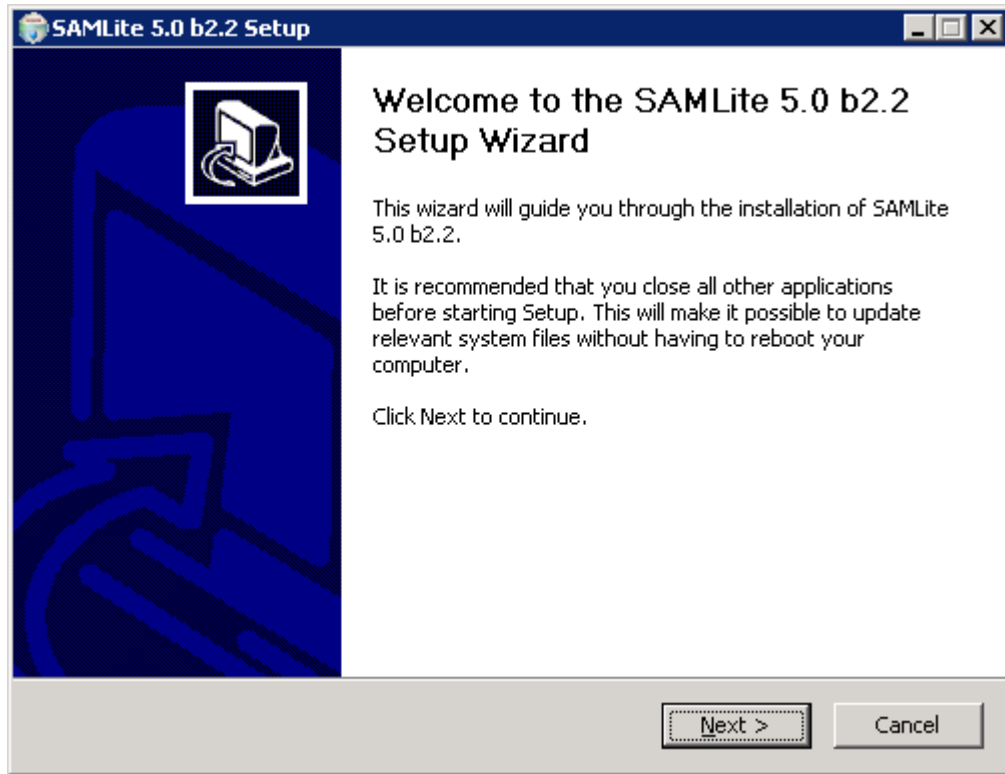
1	SAMLite Installation .....	3
1.1	Running the Installer .....	3
1.2	SAMLite Database Configuration .....	8
2	The SAMLite Web Dashboard .....	14
2.1	Changing the Administrator password .....	15
2.2	Configuring the SAMLite Shared Folder .....	17
2.3	Installing and using a SAMLite Server license file. ....	19
3	The SAMLite scan script .....	21
3.1	Scanning unconnected machines.....	22
4	Appendix .....	23
4.1	SAMScanConfig.txt settings .....	23
4.2	Event Log Advanced Settings .....	24
4.3	Google API Keys .....	25

## 1 SAMLite Installation

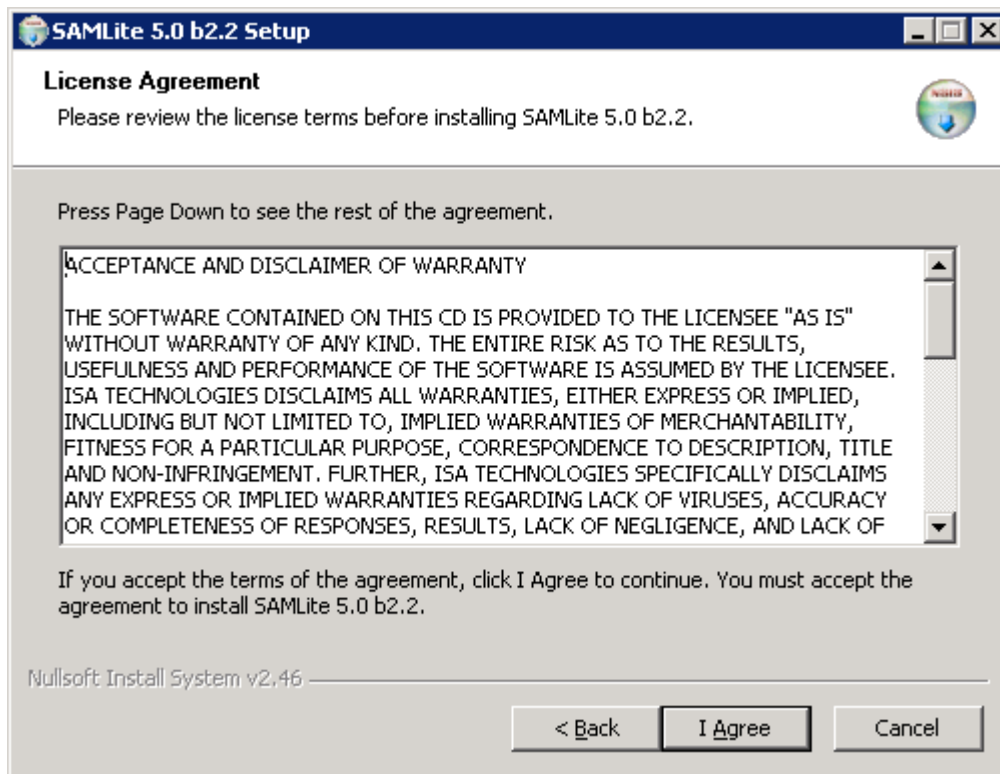
Before running the Installer please ensure that the SAMLite System Requirements are met. You can refer to the SAMLite Requirements.pdf for the SAMLite System requirements.

### 1.1 Running the Installer

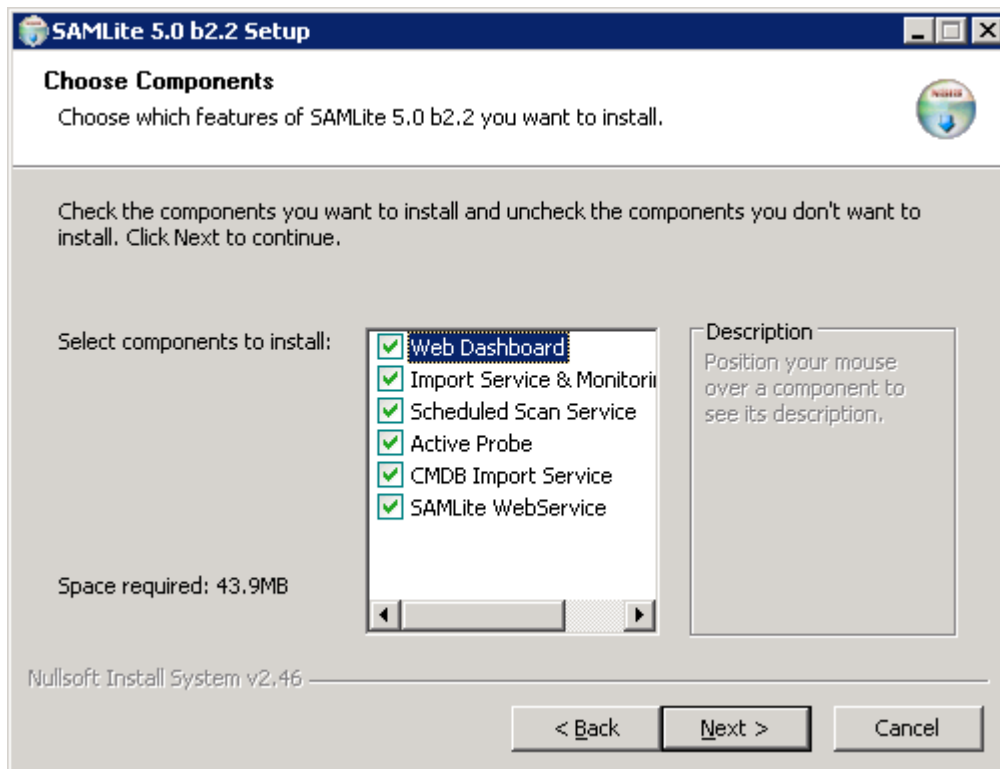
Run the SAMLite installer (e.g. SAMLiteSetup.exe )



Click on Next

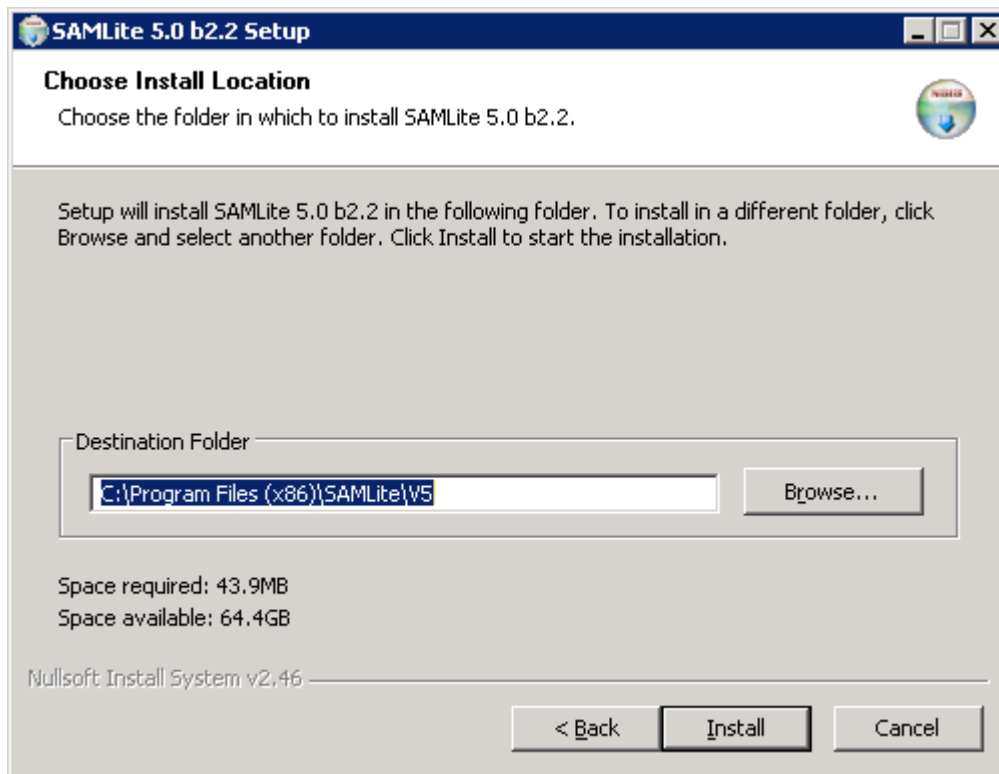


Click on I Agree if you agree to the terms.

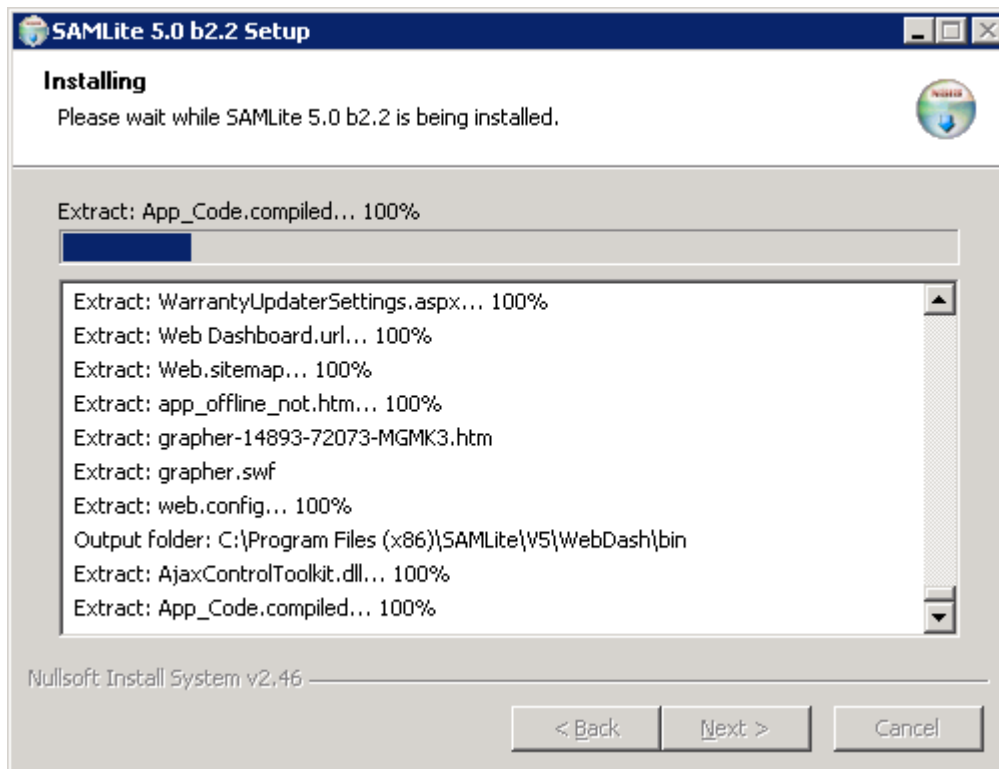


Click on Next

## SAMLite: Installation and Initial Setup

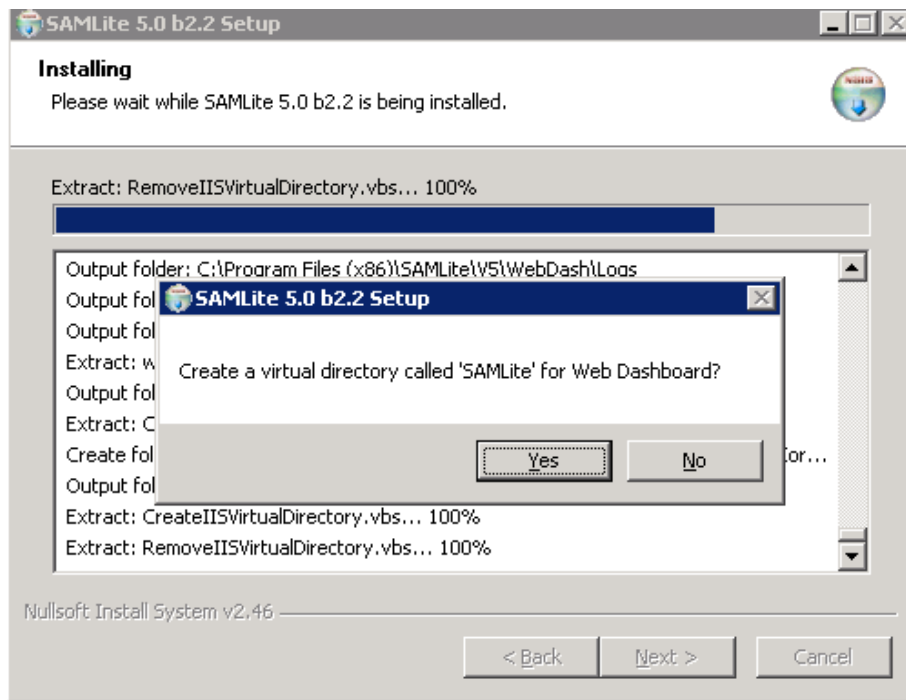


Set the Destination Folder or accept the default and click Install.

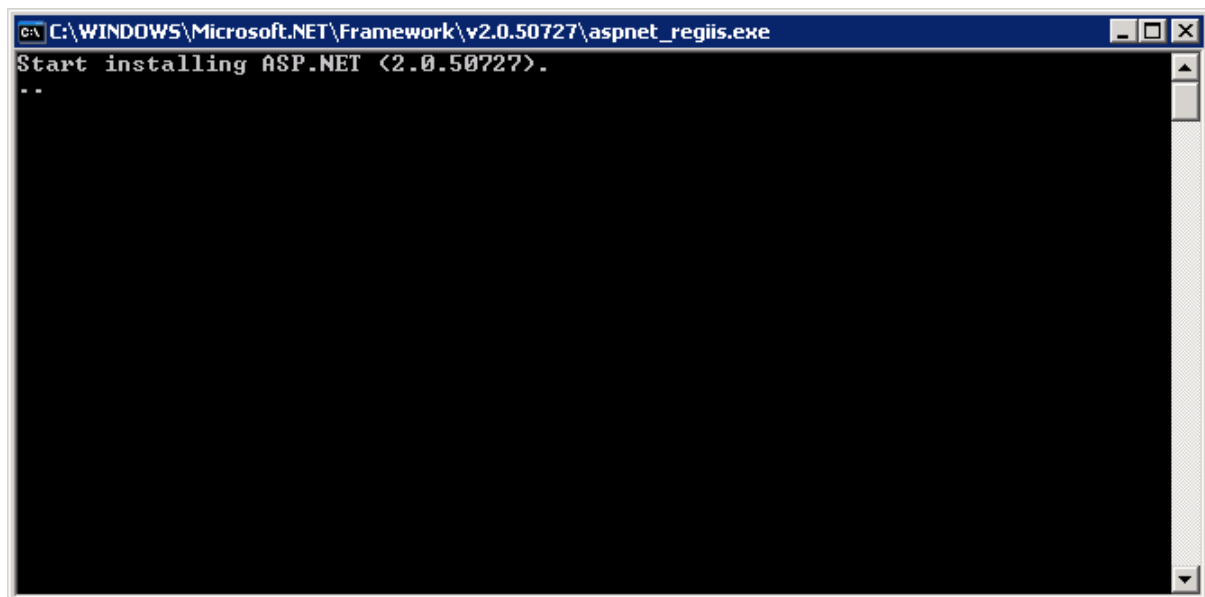


The extraction will start.

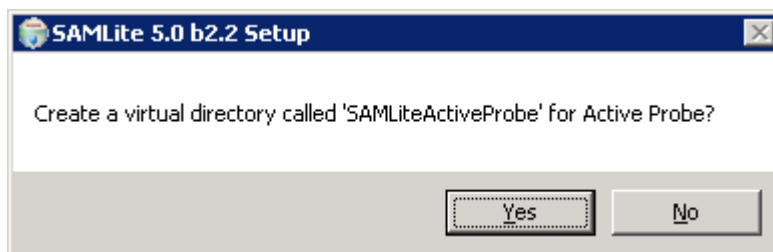
## SAMLite: Installation and Initial Setup



Click Yes

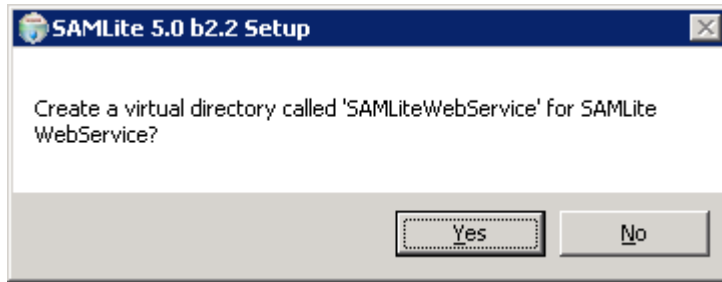


Please wait while ASP.Net is being set up.

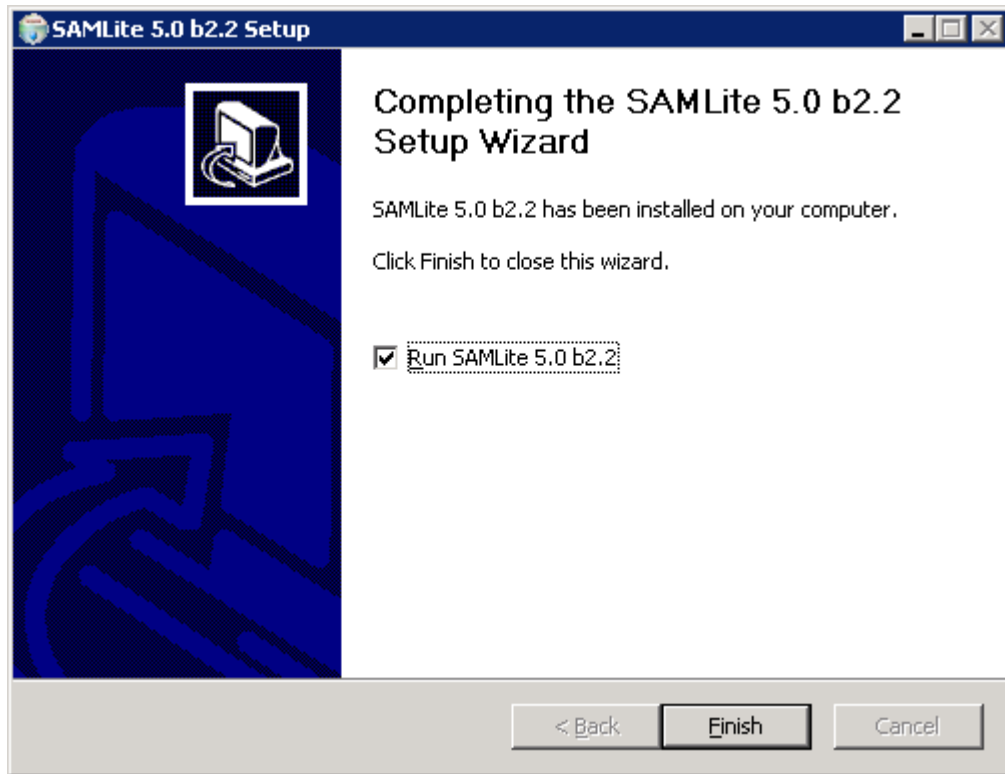


Click Yes.

## SAMLite: Installation and Initial Setup



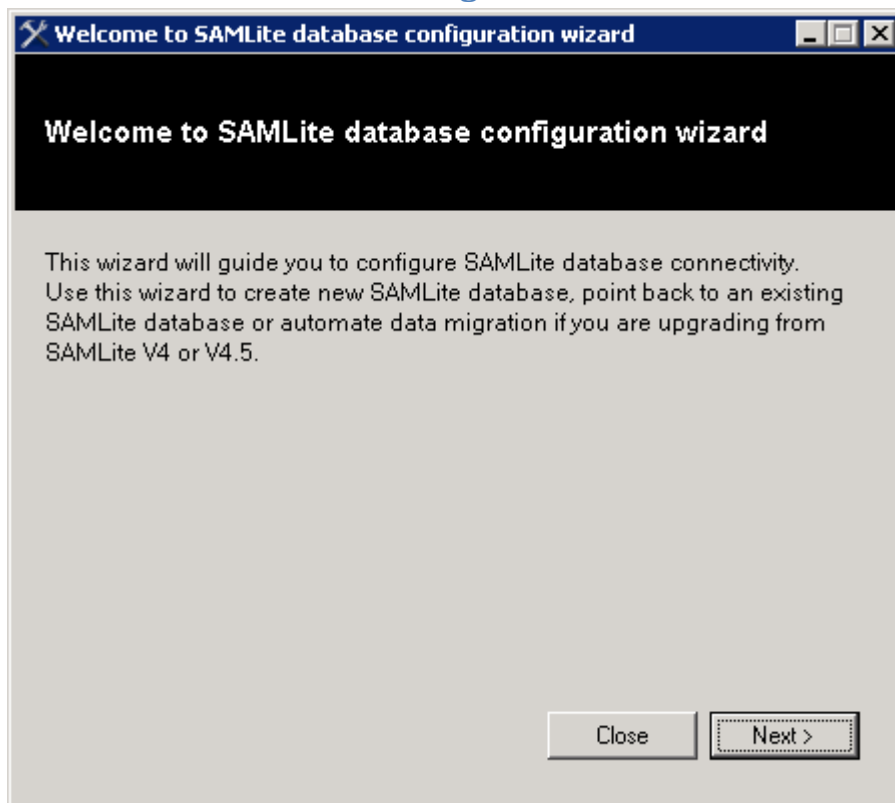
Click Yes.



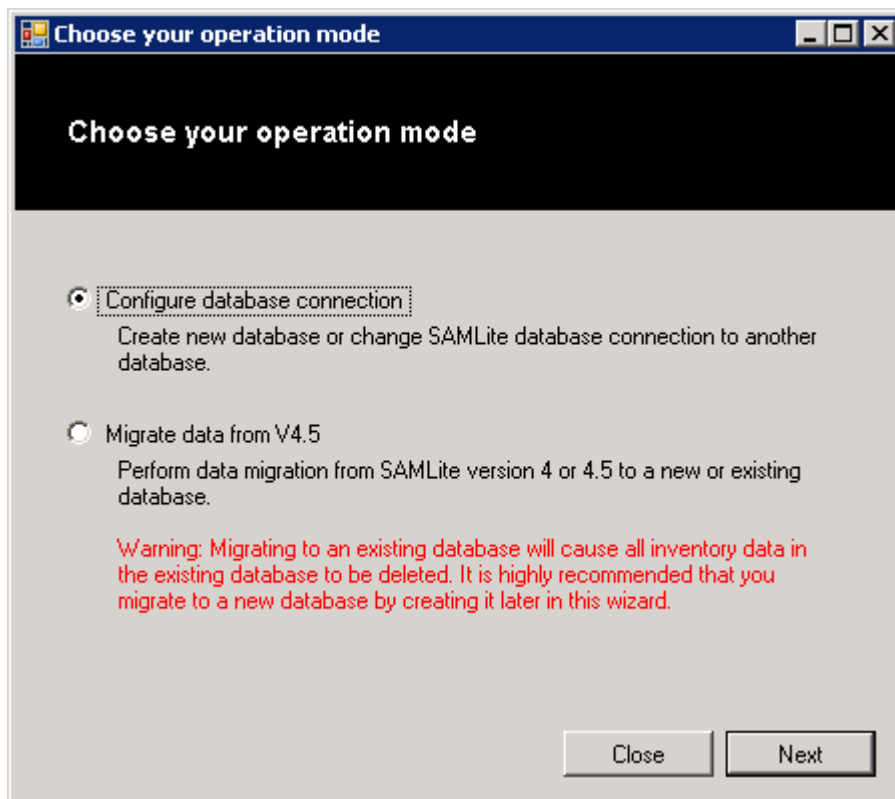
Click Finish.

You will now proceed to the SAMLite Database configuration step.

## 1.2 SAMLite Database Configuration

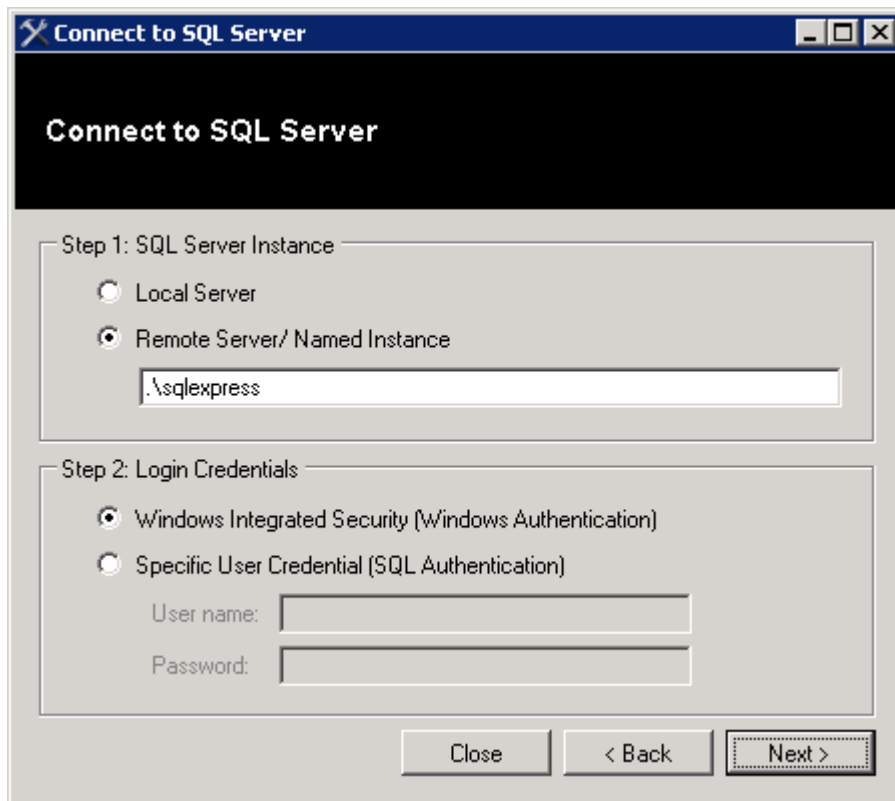


Click Next.



Click Next

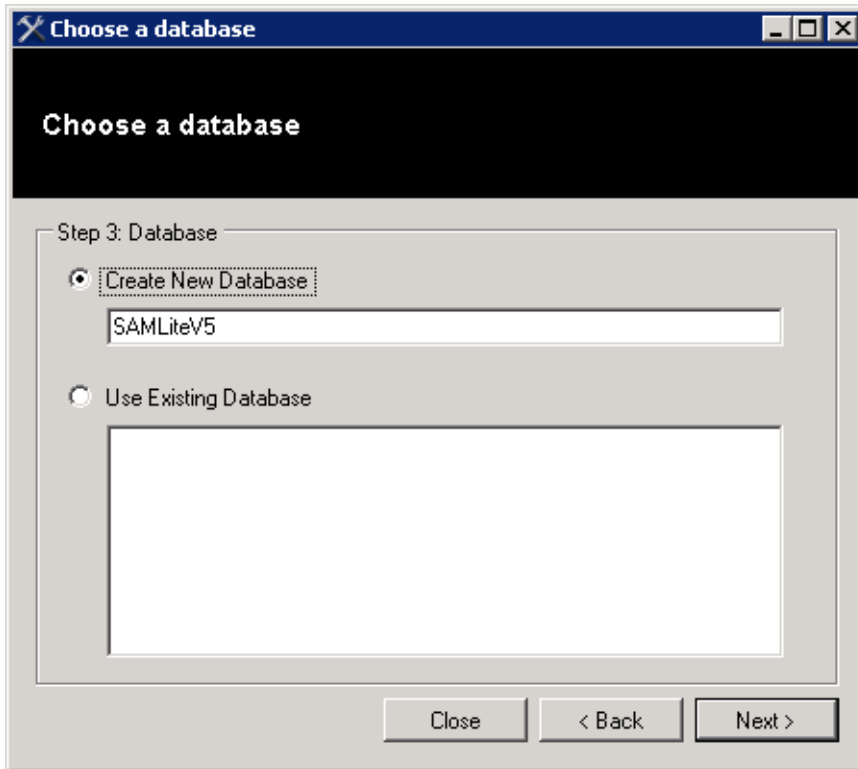




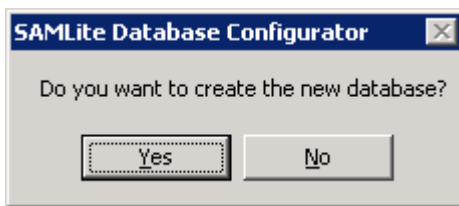
Keep the defaults and click Next if the SQL Server is the Express Edition and on the same machine.

Otherwise click on Local Server if the SQL Server is the Standard Edition and on the same machine.

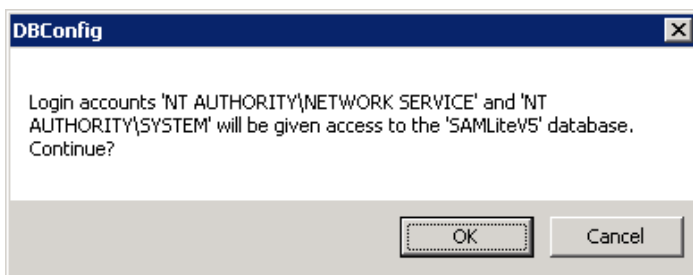
Or enter the path to the SQL Server Instance and the appropriate credentials to connect to it.



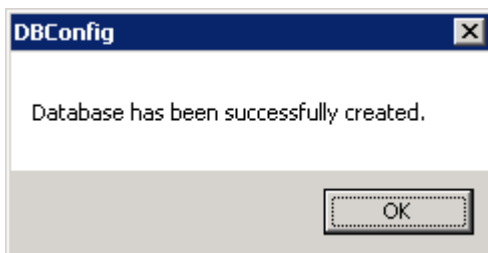
Click Next.



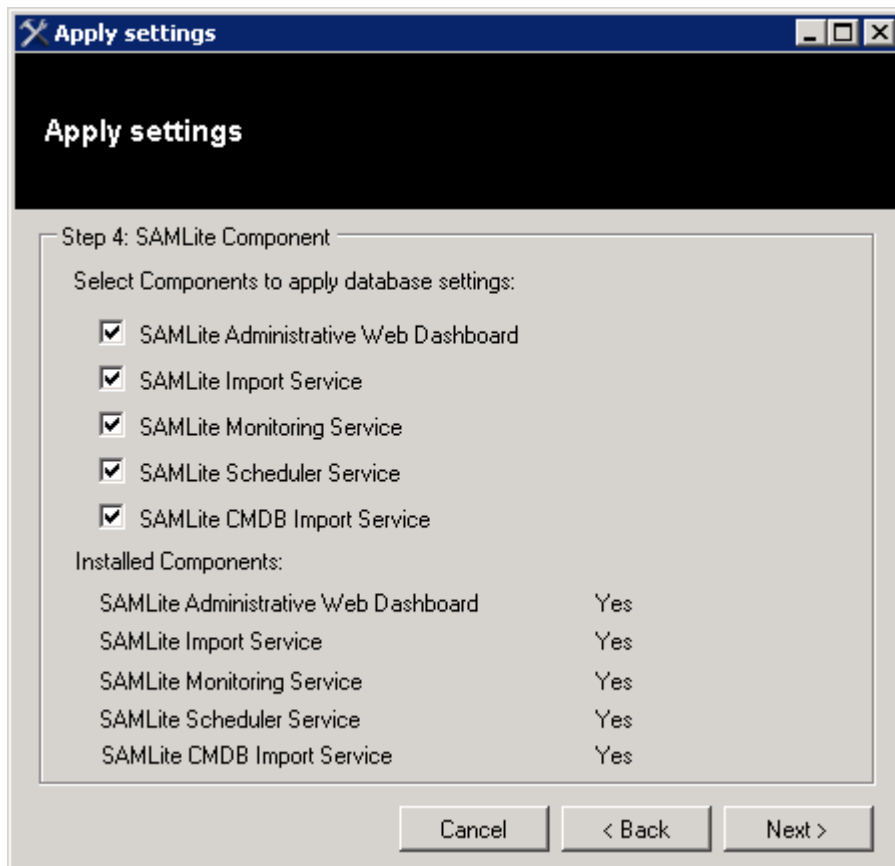
Click Yes



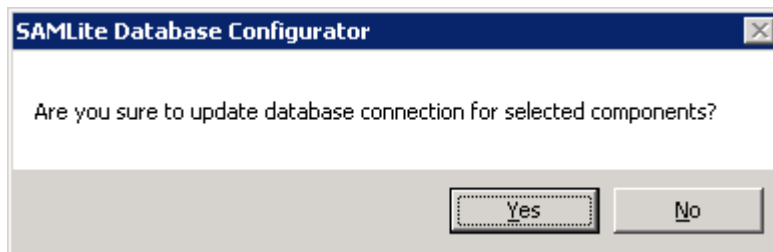
Click OK.



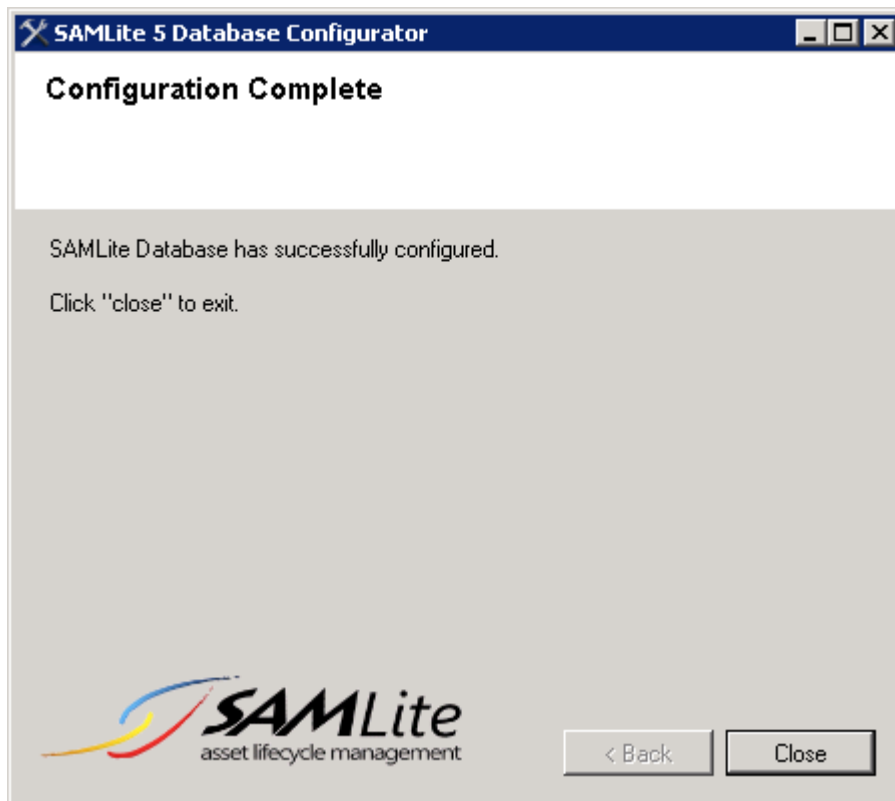
Click OK.



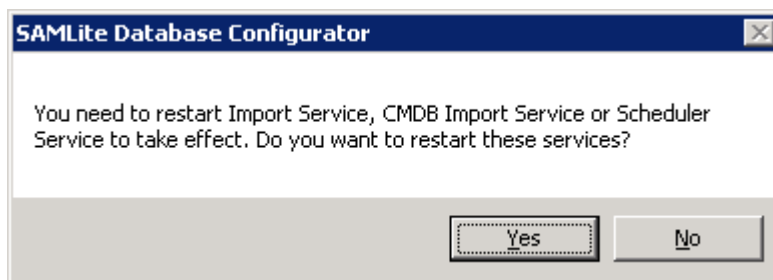
Click Next to apply the DB settings to the SAMLite modules.



Click Yes to confirm.

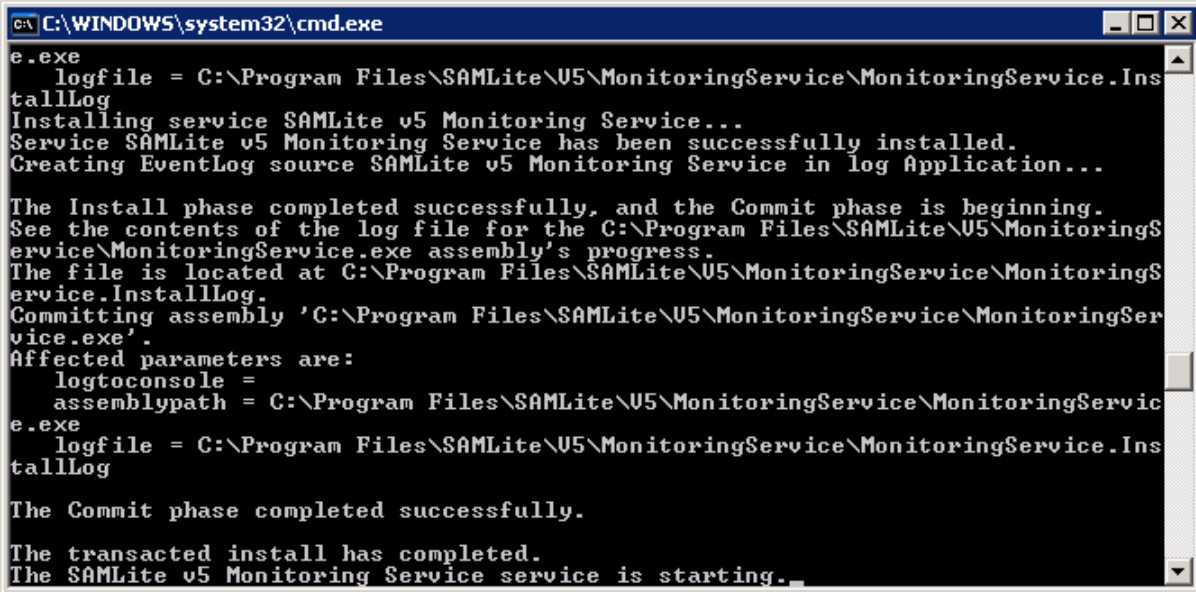


Click close



Click Yes

## SAMLite: Installation and Initial Setup

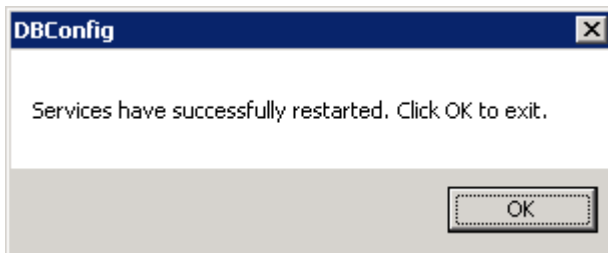


```
C:\WINDOWS\system32\cmd.exe
e.exe
logfile = C:\Program Files\SAMLite\U5\MonitoringService\MonitoringService.InstallLog
Installing service SAMLite v5 Monitoring Service...
Service SAMLite v5 Monitoring Service has been successfully installed.
Creating EventLog source SAMLite v5 Monitoring Service in log Application...

The Install phase completed successfully, and the Commit phase is beginning.
See the contents of the log file for the C:\Program Files\SAMLite\U5\MonitoringService\MonitoringService.exe assembly's progress.
The file is located at C:\Program Files\SAMLite\U5\MonitoringService\MonitoringService.InstallLog.
Committing assembly 'C:\Program Files\SAMLite\U5\MonitoringService\MonitoringService.exe'.
Affected parameters are:
  logtoconsole =
  assemblypath = C:\Program Files\SAMLite\U5\MonitoringService\MonitoringService.exe
e.exe
logfile = C:\Program Files\SAMLite\U5\MonitoringService\MonitoringService.InstallLog

The Commit phase completed successfully.
The transacted install has completed.
The SAMLite v5 Monitoring Service service is starting.
```

You will see messages like the above, this is normal.



Click OK.

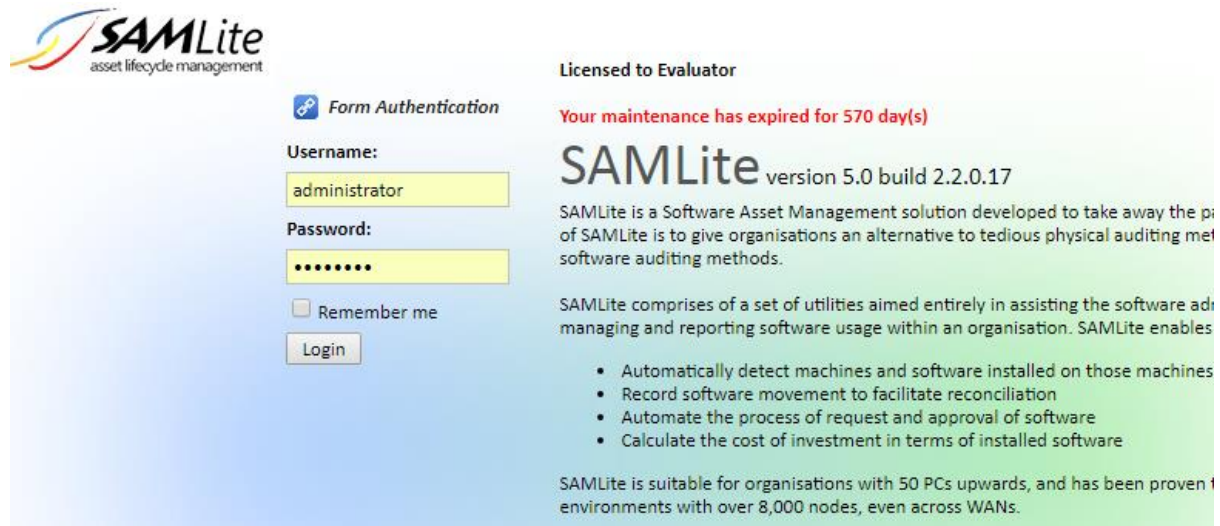
You have now completed the SAMLite installation and the SAMLite database configuration.

## 2 The SAMLite Web Dashboard

The SAMLite Web Dashboard is the web-based interface for using SAMLite.

To go to the **SAMLite Web Dashboard** open <http://TheSAMLiteServerAddress/SAMLite/>

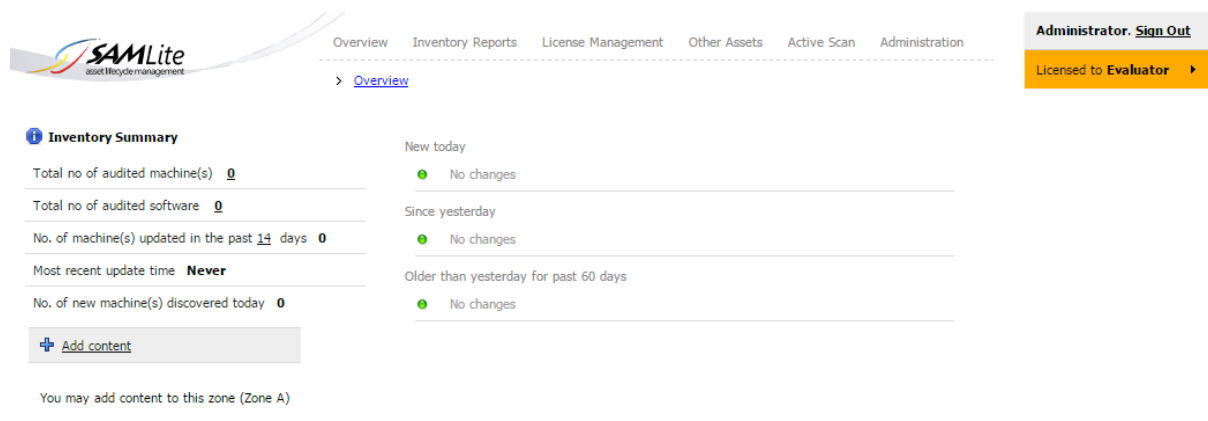
(replace TheSAMLiteServerAddress with the address of the SAMLite server).



The default admin credentials are: Administrator and password

Enter them and click on Login.

You should see something like the following:



## 2.1 Changing the Administrator password

To change the password, click on Administration, and look for the Users & Roles section

### Users & Roles

Create a user

Edit or delete a user

Add or remove a user's role

Allow user access to department

Allow user access to location

Then click on Edit or Delete a user

#### Edit/Delete Users

User Account	
<u>Administrator</u>	

User Name	<input type="text"/>	
Rename		
Full Name	<input type="text"/>	
Email	<input type="text"/>	
Phone no.	<input type="text"/>	
Fax no.	<input type="text"/>	
Address/Location	<input type="text"/>	
Is locked out	<input type="checkbox"/>	
<input type="button" value="Save"/>	<input type="button" value="Delete this user"/>	<input type="button" value="Reset Password"/>

Select Administrator

**Edit/Delete Users**

User Account	
<b>Administrator</b>	
User Name	Administrator Rename
Full Name	Administrator
Email	
Phone no.	
Fax no.	
Address/Location	
Is locked out	<input type="checkbox"/>
<input type="button" value="Save"/> <input type="button" value="Delete this user"/> <input type="button" value="Reset Password"/>	

Select Reset Password

**Edit/Delete Users**

User Account	
<b>Administrator</b>	
User Name	Administrator Rename
New password	.....
Repeat New password	.....
<input type="button" value="Save Password"/> <input type="button" value="Cancel"/>	

Enter the new password and confirmation, and click on Save Password.



**X Password has been successfully reset**

User Name   
Rename

Full Name

Email

Phone no.

Fax no.


Address/Location

Is locked out

## 2.2 Configuring the SAMLite Shared Folder

The SAMLite Shared Folder is where all the scan report files are written to.

Go to Administration, System Settings

-  **System Settings**
- Configure share folder
  - Configure email notification
  - Configure maintenance settings
  - Configure machine status
  - Configure inactive machine deletion
  - Configure database log truncation
  - Configure database indexes re-build
  - Manage SAMLite licenses

Select Configure Share Folder

## SAMLite: Installation and Initial Setup

**Configure Share Folder**

Share folder path is already configured. You may update the path by clicking the change link and alter the path value.

Path  [Change](#)

If the SAMLite server address/name is not correct click on Change and change it and then click Save.

### 2.3 Installing and using a SAMLite Server license file.

If you have a SAMLite license file you will need to install it to use it.


Go to Administration, System Settings

#### System Settings

- Configure share folder
- Configure email notification
- Configure maintenance settings
- Configure machine status
- Configure inactive machine deletion
- Configure database log truncation
- Configure database indexes re-build
- Manage SAMLite licenses

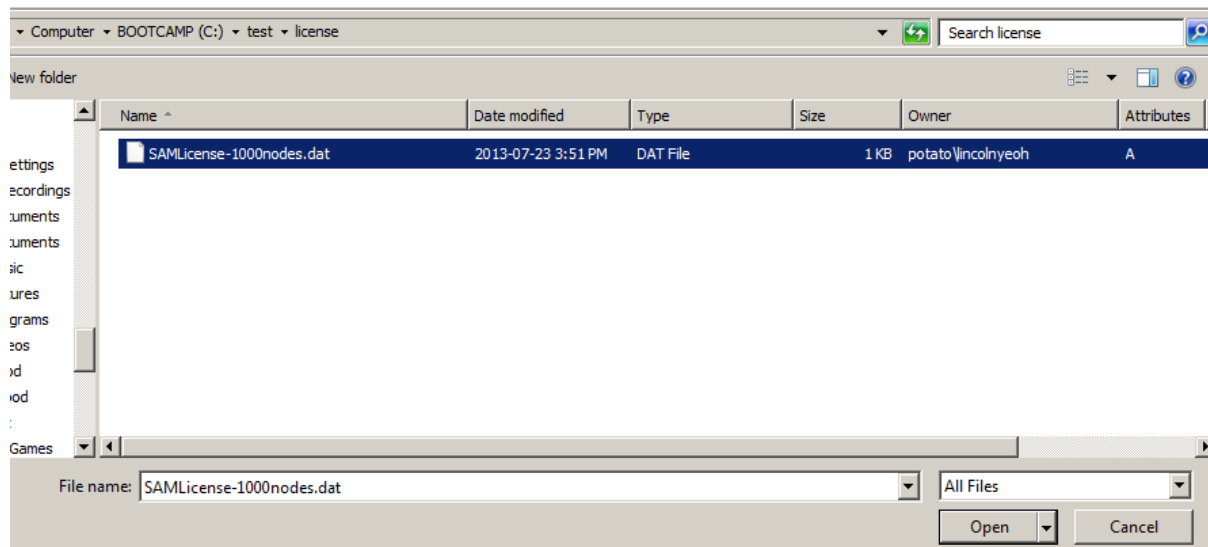
Select Manage SAMLite licenses

Manage SAMLite Licenses

Choose file No file chosen  Upload License  Delete Licenses

<input type="checkbox"/>	Active	ID	Organization Name	Nodes	Type	Expiry Date	Maintenance Expiry	Updated	size	Action
<input type="checkbox"/>	1	1	Evaluator	5	Permanent		17 Jul 2013	27/02/2014 7:13:31 PM	632	<a href="#">Download</a> <a href="#">Select</a>

Click on choose file



Locate the SAMLite license file and click open



Manage SAMLite Licenses

Choose file SAMLicense-1000nodes.dat  Upload License  Delete Licenses

## SAMLite: Installation and Initial Setup

Click  Upload License.

Manage SAMLite Licenses

Choose file No file chosen  Upload License  Delete Licenses



**License uploaded**

<input type="checkbox"/>	Active	ID	Organization Name	Nodes	Type	Expiry Date	Maintenance Expiry	Updated	size	Action
<input type="checkbox"/>	1	1	Evaluator	5	Permanent		17 Jul 2013	27/02/2014 7:13:31 PM	632	<a href="#">Download</a> <a href="#">Select</a>
<input type="checkbox"/>	0	2	ISA Innovation	1000	Permanent		23 Jul 2015	27/02/2014 7:16:45 PM	800	<a href="#">Download</a> <a href="#">Select</a>

The license should be uploaded. Now click on Select to use the uploaded license.

Select and use this license?

Click OK.

Choose file No file chosen  Upload License  Delete Licenses Select License: last completed at 27/02/2014 7:18:23 PM

**License selected successfully**

<input type="checkbox"/>	Active	ID	Organization Name	Nodes	Type	Expiry Date	Maintenance Expiry	Updated	size	Action
<input type="checkbox"/>	1	2	ISA Innovation	1000	Permanent		23 Jul 2015	27/02/2014 7:16:45 PM	800	<a href="#">Download</a> <a href="#">Select</a>
<input type="checkbox"/>	0	1	Evaluator	5	Permanent		17 Jul 2013	27/02/2014 7:13:31 PM	632	<a href="#">Download</a> <a href="#">Select</a>

After a short while the license should be selected.

If you click on the arrow in the top right you can see the license details:

Administration **Administrator. [Sign Out](#)**

Licensed to **ISA Innovation** 

**Full License Details**

Organization Name: **ISA Innovation**

Total nodes: **1000**

License Type: **Permanent**

Start Date:

Expiry Date:

Organization Address: **Suite 2.02 Level 2, 1 First Avenue  
Utama, 47800 Petaling Jaya, Selangor  
Malaysia**

Contact Person:

Phone No:

Email:

Maintenance Start Date: **23/07/2013**

Maintenance Expiry Date: **23/07/2015**





Description: **Licensed for ISA Innovation use**

### 3 The SAMLite scan script

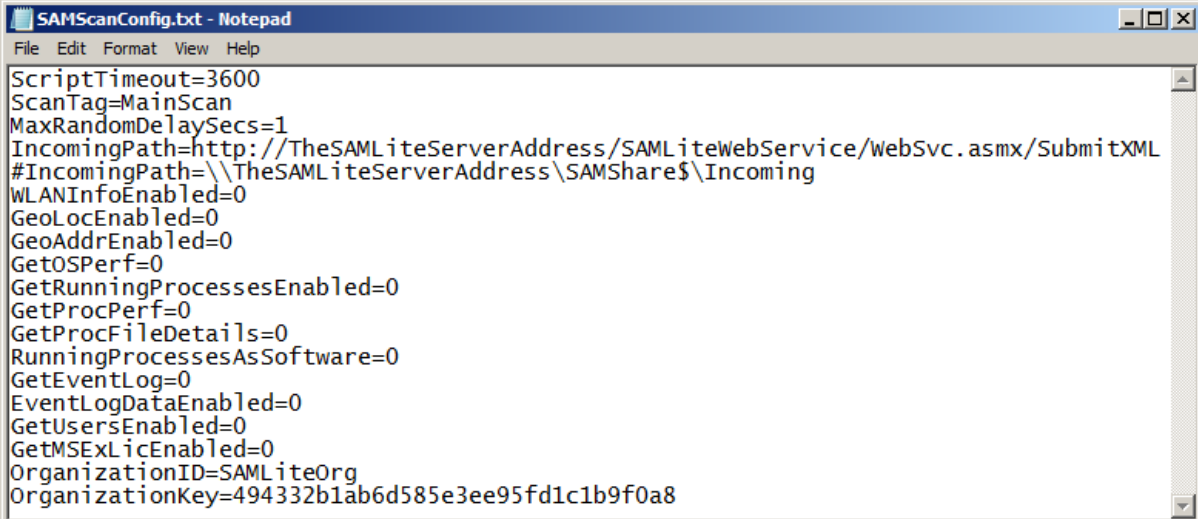
You can download the latest SAMLite scan script from:

<http://www.samlite.net/samlite/downloads/SAMLiteScan.zip>

Unzip the SAMLiteScan.zip to a folder

Name ^	Date modified	Type	Size
 localscan.vbs	2018-07-17 10:40 AM	VBScript Script File	108 KB
 SAM.bat	2017-07-10 3:15 PM	Windows Batch File	1 KB
 SAMScanConfig.txt	2018-07-25 4:14 PM	Text Document	1 KB
 wifihelper.exe	2017-02-02 6:22 PM	Application	175 KB

Then edit **SAMScanConfig.txt**



```
ScriptTimeout=3600
ScanTag=MainScan
MaxRandomDelaySecs=1
IncomingPath=http://TheSAMLiteServerAddress/SAMLiteWebService/WebSvc.asmx/SubmitXML
#IncomingPath=\\TheSAMLiteServerAddress\SAMShare$\Incoming
WLANInfoEnabled=0
GeoLocEnabled=0
GeoAddrEnabled=0
GetOSPerf=0
GetRunningProcessesEnabled=0
GetProcPerf=0
GetProcFileDetails=0
RunningProcessesAsSoftware=0
GetEventLog=0
EventLogDataEnabled=0
GetUsersEnabled=0
GetMSExLicEnabled=0
OrganizationID=SAMLiteOrg
OrganizationKey=494332b1ab6d585e3ee95fd1c1b9f0a8
```

Change *SAMLiteServerAddress* to the SAMLite server address. Save the changes.

Note: if you want to use https (recommended) you will have to get a valid HTTPS certificate for the samlite server's address and configure IIS to use it for the SAMLite web apps.

These three files are then used for scanning machines.

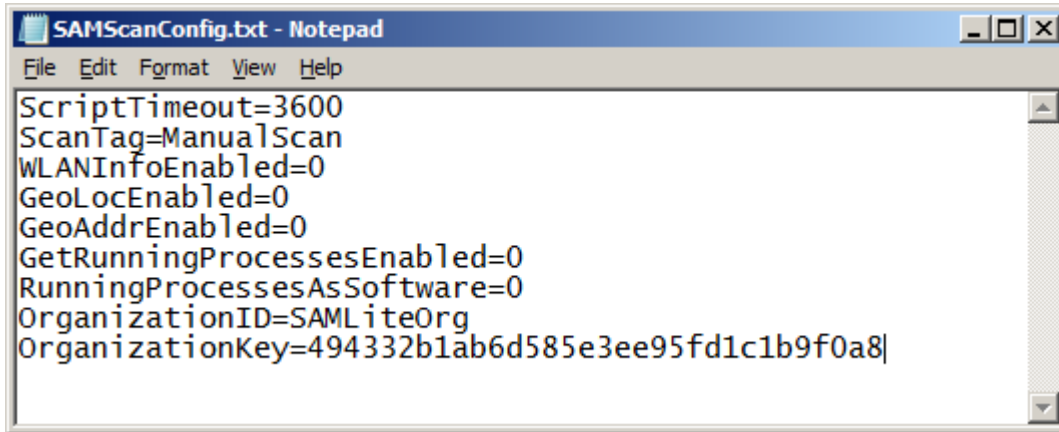
1. The localscan.vbs file is the actual scanning script.
2. The SAMScanConfig.txt is the configuration file that localscan.vbs uses to get settings. For more information see *Appendix, SAMScanConfig.txt settings*.
3. The sam.bat is a batch file that calls the localscan.vbs file (for convenience).

If you copy these three files to a folder on a file share or USB drive then run sam.bat, the machine that you run sam.bat on while be scanned and the scan results will be copied to the IncomingPath.

To use these files as logon scripts or scheduled tasks in Active Directory consult the “**Active Directory Configuration**” documentation.

### 3.1 Scanning unconnected machines

To scan machines that are not connected to the network or cannot reach the SAMLite server, edit the SAMScanConfig.txt file and remove the IncomingPath line (you may also wish to change the ScanTag so that you know that the scanning is done manually):



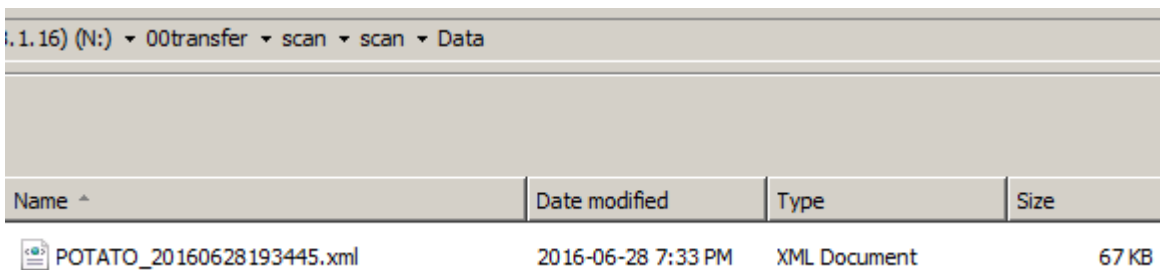
```
ScriptTimeout=3600
ScanTag=ManualScan
WLANInfoEnabled=0
GeoLocEnabled=0
GeoAddrEnabled=0
GetRunningProcessesEnabled=0
RunningProcessesAsSoftware=0
OrganizationID=SAMLiteOrg
OrganizationKey=494332b1ab6d585e3ee95fd1c1b9f0a8}
```

Next create a Data folder:

Name ^	Date modified	Type	Size
Data	2018-07-25 5:29 PM	File folder	
localscan.vbs	2018-07-17 10:40 AM	VBScript Script File	108 KB
SAM.bat	2017-07-10 3:15 PM	Windows Batch File	1 KB
SAMScanConfig.txt	2018-07-25 4:22 PM	Text Document	1 KB
wifihelper.exe	2017-02-02 6:22 PM	Application	175 KB

Next copy these files and Data folder to a USB drive. Then plug in the usb drive to each machine and run sam.bat

The scan results will be stored in the Data folder.



Name ^	Date modified	Type	Size
POTATO_20160628193445.xml	2016-06-28 7:33 PM	XML Document	67 KB

You can then move/copy the xml files to the SAMLite Server's IncomingPath and they will be processed as normal.

## 4 Appendix

### 4.1 SAMScanConfig.txt settings

Lines starting with # are ignored and may be used for comments or for commenting out settings.

Setting Name	Description
<b>ScriptTimeout</b>	The maximum number of seconds the script is allowed to run for
<b>ScanTag</b>	Text for distinguishing between different scans e.g. manual scans, different scheduled task scans.
<b>MaxRandomDelay</b>	Delay scan by a random time up to <b>MaxRandomDelay</b> seconds. Use this to spread out when the scan occurs.
<b>IncomingPath</b>	The destination for scan results. Replace <i>TheSAMLiteServerAddress</i> with the name or address of your SAMLite server
<b>WLANInfoEnabled</b>	Set to 1 to enable gathering of WiFi info which is used for GeoLocation.
<b>GeoLocEnabled</b>	Set to 1 to enable GeoLocation (must set <b>WLANInfoEnabled</b> =1 and specify <b>GoogleAPIKey</b> too)
<b>GoogleAPIKey</b>	The Google Geolocation API key for converting WiFi information to latitude and longitude. You will need to sign up for one with Google (which may be chargeable depending on usage). See the <i>Google API Keys</i> section for more information.
<b>GeoAddrEnabled</b>	Set to 1 to enable getting street addresses – requires <b>GoogleAPIKey2</b> to be specified
<b>GoogleAPIKey2</b>	The Google Geocoding API key for converting latitude and longitude location to street addresses. See the <i>Google API Keys</i> section for more information.
<b>GetOSPerf</b>	Set to 1 to enable gathering of OS performance information.
<b>GetRunningProcessesEnabled</b>	Set to 1 to gather information about running processes. This can slow down scanning and increase bandwidth usage significantly.
<b>GetProcPerf</b>	Set to 1 to gather process performance information
<b>GetProcFileDetails</b>	Set to 1 to gather file information of running processes
<b>RunningProcessesAsSoftware</b>	Set to 1 to report running processes as a software ( the publisher will be <i>ISA-Running-Processes</i> )
<b>GetEventLog</b>	Set to 1 to gather Windows Event Log information. This can slow down scanning and increase bandwidth usage significantly. See the <i>Event Log Advanced Settings</i> section for more information.
<b>GetUsersEnabled</b>	Set to 1 to gather local user account information (e.g. LastLogon, Disabled status). This can slow down scanning in some scenarios.
<b>GetMSExLicEnabled</b>	Set to 1 to attempt gathering of Microsoft Exchange License information.
<b>OrganizationID</b>	If changed needs to match <i>OrganizationID</i> set in the SAMLite server's WebService web.config
<b>OrganizationKey</b>	If changed needs to match <i>OrganizationKey</i> set in the SAMLite server's WebService web.config

## 4.2 Event Log Advanced Settings

Setting Name	Description
<b>EventLogMaxLogs</b>	Maximum number of event logs to fetch. Default=500
<b>EventLogMaxDays</b>	Maximum number of days of event logs to fetched. Default=90.
<b>EventLogBootTimeOffset</b>	The number of days before the machine boot up time to get event logs. Default=1
<b>EventLogDataEnabled</b>	Set to 1 to get the extra Event Data
<b>EventLogMaxMsgLen</b>	Event messages longer than this will be truncated. Default=500
<b>EventLogMaxDataLen</b>	Event Data longer than this will be truncated. Default=500
<b>EventLogWhere</b>	Set to customize the “Where” clause used to select event logs.
<b>EventLogWhereAdd</b>	Set to add “Where” clauses to the default Where clause used to select event logs.

The default **EventLogWhere** is:

```
(TimeGenerated >= '[MinDate]') and (TimeGenerated >= '[BootUpTime]') and
(Logfile = 'System') and (SourceName <> 'Microsoft-Windows-Time-Service')
and ((SourceName='Microsoft-Windows-Power-Troubleshooter' and EventCode =
'1') or ( SourceName='Microsoft-Windows-Kernel-General' and (EventCode =
'1' or EventCode = '12' or EventCode = '13')) or ( SourceName='Microsoft-
Windows-Kernel-Power' and (EventCode = '42' or EventCode = '109')) or
(EventType < 3 and (SourceName='EventLog' or SourceName='Microsoft-Windows-
Kernel-General' or SourceName='Microsoft-Windows-Kernel-Power' or
SourceName='disk' or SourceName='Microsoft-Windows-Disk' or
SourceName='Ntfs' or SourceName='Microsoft-Windows-FailoverClustering' or
EventCode='9' or EventCode='11' or EventCode='15' or EventCode='54' or
EventCode='129'))))
```

In the “where” string there are placeholder strings **[MinDate]** and **[BootUpTime]** which are replaced as follows:

**[MinDate]** => is the time **EventLogMaxDays** days before the machine scan time

**[BootUpTime]** => is the time **EventLogBootTimeOffset** days before the machine last boot up time.

This default fetches shutdown, startup, wake, sleep and time change events. It also fetches Warning and Error events from the kernel, disk, Ntfs or FailoverClustering event sources. Only events after **[MinDate]** and **[BootUpTime]** are fetched (whichever is later).

Specifying a custom **EventLogWhereAdd** allows you to use the existing **EventLogWhere** while adding other criteria or clauses that you want.



### **4.3 Google API Keys**

SAMLite can use two Google API Keys. The Geolocation API Key is used for converting WiFi information to latitude and longitude information. The Geocoding API key is used for converting latitude and longitude to a street or building address.

To obtain these keys you need to sign up with Google Maps Platform. You will also need to provide valid credit card information to Google. Currently Google gives free usage up to a certain amount. You can set quotas to control costs. However if the limits are hit it means that the fetching of location and/or address information from Google would fail till the next quota period or the quota is increased.